

# NURSERY



# NURSERY

Coming up week beginning 12.6.23

**Rockhoppers-** Well done everyone for remembering their packed lunches! This will continue all half term.

### **Before school**

**Toilets-** please ensure your child has been to the toilet just before they come to Nursery. For safeguarding reasons we are not able to let your child into the classroom early to the toilet. In an emergency please take your child to reception. This is in an emergency only.

**Resources-** Please can children refrain from playing with the resources in the outdoor classroom before school. This includes balls, blocks and books.

**Hot weather-** All children must have a sun hat and a water bottle every day. Please apply sun cream before your child comes into Nursery in the morning.

**Please could we ask for any of the plastic twist tops from fruit pouches or baby food etc. These make a great maths resource!**



## **Theme for the Term: Little Explorers**

Our focus this half term will be on exploring. Initially this we will explore different places that are different to where we will such as the forest, rivers or the sea side. This will then develop into a few weeks on transitioning into Reception for those children who are moving on.

## **Theme for the week: Forests**

### **Understanding the World and Literacy**

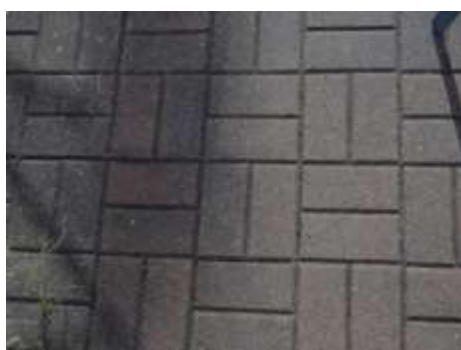
We will read the story 'Owl babies' this week which is set in a forest. We will explore what it is like in a forest, linking to 'We're going on a bear hunt'. We will think of exciting words to describe forests on Wellie Wednesday while we sit under the trees!

### **Phonics**

The sound we are focusing on is 'Qu'. We will explore lots of words that start with 'Qu' though hearing the sound 'Qu' in words. Remember - when exploring sounds in phonics we are focusing on just the phonemes aurally - just the sounds, not the letter name or the written symbol that represents a sound.

### **Maths**

This week is all about patterns! We will continuing, copyikng and creating our own patterns. We will also look for patterns in the environment. Have a look with your child and see what patterns you can find!



Here are a few reminders to help with the daily running of the Nursery.

### What to bring into Nursery

Please ensure your child has the following with them every day:

- Clearly named water bottle (a familiar sticker might be useful). This must contain only water please, not juice.
- Clearly named book bag- it is helpful for the book bag to have one keyring on so that your child is able to recognise the book bag.
- Clearly named coat.

Your child does not need to bring in an additional rucksack with fruit or spare clothes (unless we have a separate arrangement that has been agreed). It is important that your child is able to be independent from the start, so less items to remember will help!

### Lunchboxes

If your child is in Emperor Penguins please remember to pack a healthy, manageable lunch for your child to eat. If there is too much in their lunchbox, they can become over faced.

Grapes- please cut these in half, lengthwise for safety.

**NUT FREE SCHOOL! At The Mead we are a nut free school. There are several children with nut allergies in Nursery. It is of uttermost importance that lunchboxes contain no nuts. This also includes foods that contain sesame seeds such as hummus or crackers with seeds.**

### Uniform

The nursery children look very smart in their new school uniform!

- Skirts and dresses are not part of our school uniform as they can be dangerous when climbing.
- Please make sure that your child wears shoes safe to climbing- trainers or plimsolls are perfect (only Velcro please!)
- Please also remember no jewellery is allowed as part of our school uniform policy. This includes earrings.
- Please name everything!

**Request!**

We have enjoyed junk modelling and will be adding this to our continuous provision- therefore we will always need lots of 'junk!'. Boxes, bottle tops, plastic containers, etc Please make sure none of the packaging has contained nuts!



## UNIFORM

All children are required to wear our nursery uniform. Children can dress in the uniform listed in which they feel most comfortable.

### Uniform Details

- Royal blue sweatshirt or cardigan with school logo
- Dark grey tracksuit bottoms or dark grey leggings
- White t-shirt (with or without logo)
- Dark grey or royal blue shorts (for summer)
- Shoes/trainers without laces (we suggest Velcro trainers)
- Book bag with school logo



### Optional Accessories

- Royal blue reversible fleece/waterproof jacket with school logo
- Royal blue sun hat with school logo
- Royal blue winter hat with school logo



Please note that children should not wear any jewellery to nursery.

All clothing and bags should be clearly labelled with your child's name.

