



# Welcome to The Mead Infant and Nursery School





# Our School

We are a three-form entry Infant School for children aged 3-7 with a 65 place Nursery. We offer both morning places and 30hr places at our Nursery

We are part of the Bourne Education Trust (BET)

We also have a specialist centre for up to 9 deaf children

We have 3 classes in Reception, Year 1 and in Year 2. In each class there are 30 children. We offer 90 places in Reception.

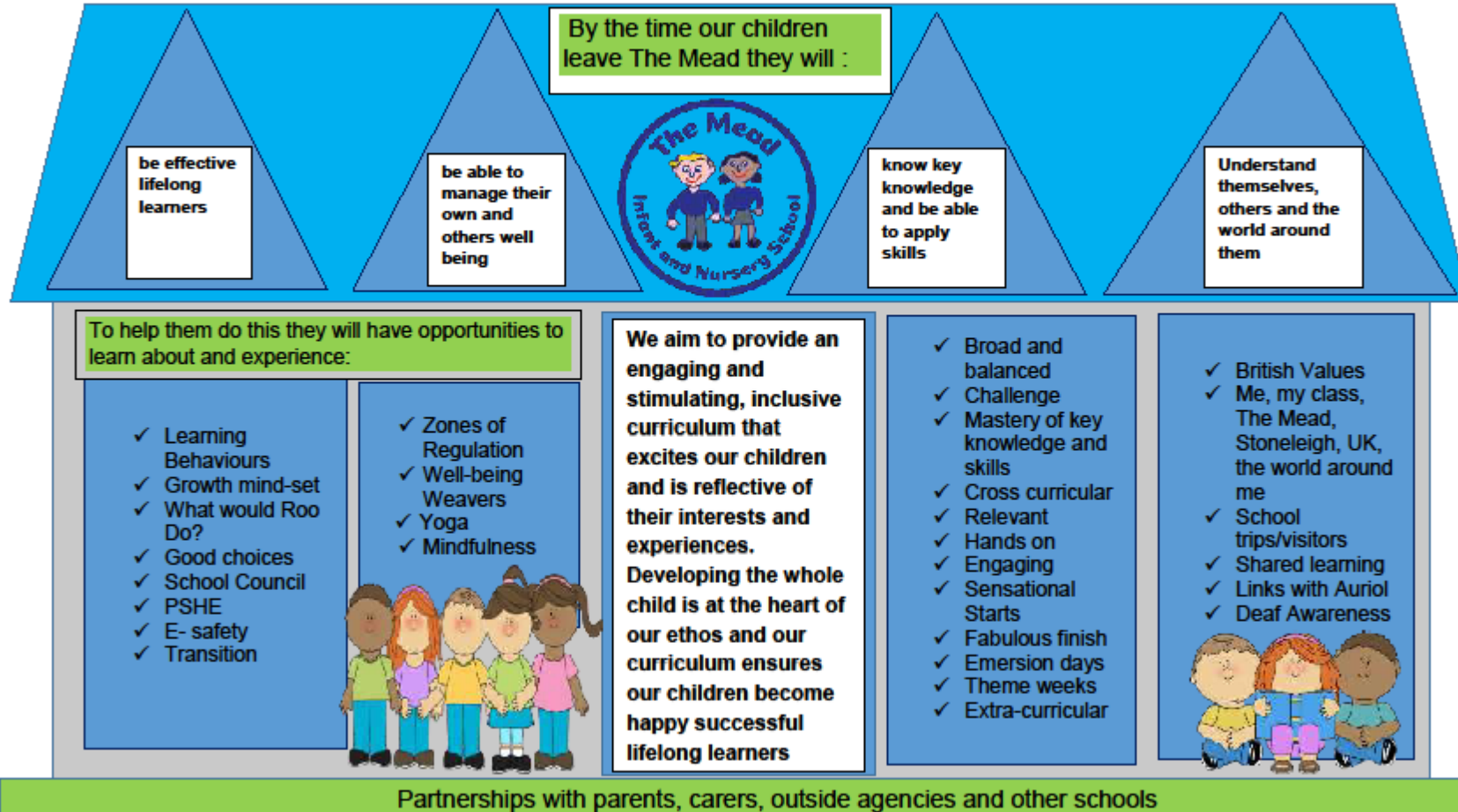
When our children leave us in Year 2, most of our children move to Auriol Junior School located just next door to us.

We have feeder status, which means all children are guaranteed a place at Auriol



# The Mead Infant and Nursery School Curriculum

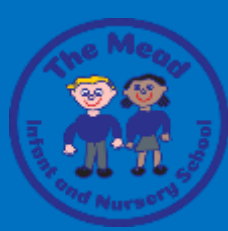
## "Proud to Belong"





# Why send your child to The Mead Infant and Nursery School?





# We are an inclusive school which values every child.





# Everyone's well-being is important to us.





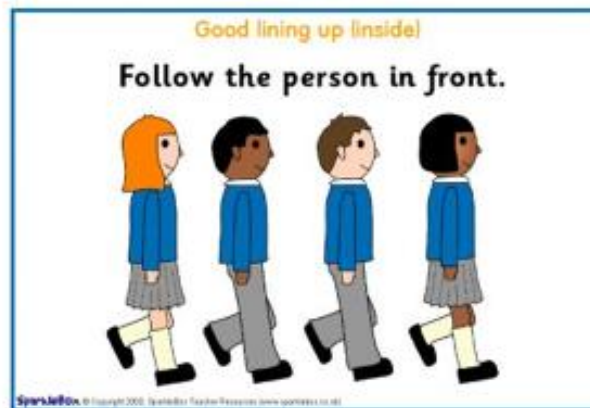
**We have high expectations of behaviour.**



- **Ready**
- **Respect**
- **Safe**



# Ready



We are ready to learn and try our best!



# Respect





# Safe



Wonderful Walking



Good  
Listening





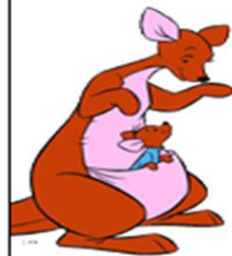
# We teach our children to be effective learners.



## **Resilient (KS1)**

### **Motivation (EYFS)**

Tigger always bounces back and he keeps trying even when it gets difficult. He never gives up.



## **Responsible (KS1)**

Kanga is responsible because she cares for Baby Roo and carries him around in her pouch. Kanga also always listens well so that she knows exactly what to do, to look after Baby Roo.



## **Resourceful (KS1)**

### **Thinking (EYFS)**

Eeyore always thinks carefully and uses a range of resources. To be a resourceful learner you must use your imagination and be creative. Eeyore once had a balloon to mend.



## **Reflective (KS1)**

Wise owl always reflects upon what he does and thinks of ways of improving. He can tell you what he is really good at and what he needs to do to, to become an even wiser owl.



## **Reasoning (KS1)**

Pooh always likes to give reasons for his decisions and explain how he worked something out. He is also really good at asking questions. He once got stuck in a hole and had to choose the best method to get out



## **Playing and exploring Engagement (EYFS)**

Piglet is Pooh's best friend. He loves to explore and play. He tries to be brave and is always willing to have a go.



# Enrichment of the Curriculum.





# Our children achieve well.



Early Years Foundation Stage – End of Reception results- good level of development (GLD)

Academic Year	The Mead	National GLD
2018-19	83%	N/A
2019-20	No data due to Covid	No data due to Covid
2020-21	No data due to Covid	No data due to Covid
2021-22	76%	65%
2022-23	79%	68%



# Our children achieve well.



Phonic screening data-percentage of Year 1 children achieving expected level

Academic Year	The Mead	National Phonics
2018-19	90%	82%
2019-20	No data due to Covid	No data due to Covid
2020-21	No data due to Covid	No data due to Covid
2021-22	80%	76%
2022-21	82.1%	79.6%



# Our children achieve well.



## Key Stage 1 Data- end of Year 2 results

KS1	The Mead 2019	National	The Mead 2020 and 2021	The Mead 2022	National 2022	The Mead 2023	National 2023
Maths achieving the expected standard or better	92%	76%	No data due to COVID	80%	68%	82%	70%
Maths achieving the greater depth	38%	22%		26%	15%	23%	16%
Reading achieving the expected standard or better	92%	75%		79%	67%	82%	68%
Reading achieving greater depth	45%	25%		26%	18%	28%	19%
Writing achieving the expected standard or better	86%	69%		63%	58%	77%	60%
Writing achieving greater depth	29%	15%		10%	8%	17%	8%



# We are “Proud to Belong”





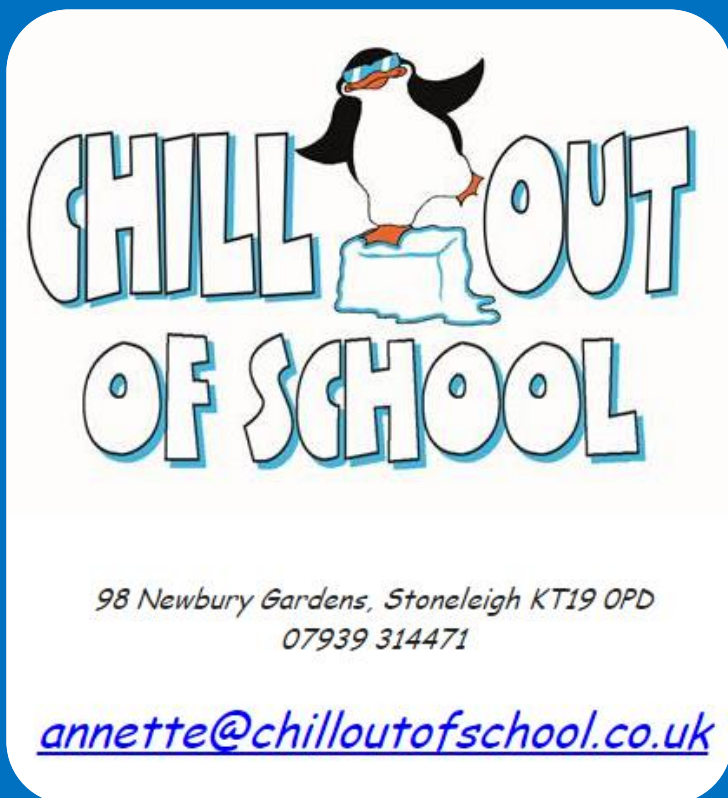
**We have a strong partnership with parents and welcome them into school.**





# We provide wrap-around care and a range of clubs.

## Breakfast Club and after School Care



### Clubs

Rock Steady  
Football  
Multi-sports  
Drama Tree  
Chess  
Budding Artists

[annette@chilloutofschool.co.uk](mailto:annette@chilloutofschool.co.uk)



## What our Parent's say

**"Xxx has had a wonderful time at The Mead. She has been very well supported with her learning needs and really progressed and grown in confidence"**

**"What a great start! Thank you Mead team."**

**"Xxx has had a brilliant start at The Mead in his first year. You clearly understand his character well and so are able to offer tailored teaching and support and he has grown so much before our very eyes this year !"**

**You've gotten to know xxx and how she "ticks" and we could not have asked for more. She loves school, her class and has a thirst for learning"**

**" You clearly know xxx and all of his ways and have been able to bring the best out in him. As well as nurturing xxx you have continued to develop his interests and love of learning- long may this continue!"**

**"xxx has gone from strength to strength during her time at The Mead and has always enjoyed coming to school"**

**" I could not think of a better school for xxx to be in"**

**"Thank you to all of the staff who have ensured that xxx is leaving The Mead with a love of learning and excellent academic achievement"**



We have well resourced classrooms and outside areas.





We have well resourced classrooms and outside areas.





# OFSTED.



All action points have been achieved and are embedded



2 Safeguarding reviews have been carried out by the Bourne Academy Trust – safeguarding judged effective with many strengths in July 2022 and October 2023



Joined BET on 1<sup>st</sup> November and our report and was expunged. This means we currently are ungraded. We expect our next full inspection by the end of the 3<sup>rd</sup> year from the date of conversion to an academy which was 1<sup>st</sup> November 2023



For further information see our website



# Next Steps

- Don't forget to apply for a place!
- Remember the deadline is January 15<sup>th</sup> 2024
- Good luck and we hope to meet you all in the near future

