

NURSERY



NURSERY

Coming up week beginning 6.2.23

To help us with our learning about brushing our teeth, please send in or email a photo of your child brushing their teeth!

Top Tip

When helping your child with mark making or writing, please do not use capital letters unless it is at the start of their name!

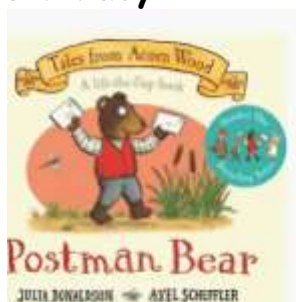
Theme for the Term: People who help us

The focus this half term will focus on 'People who help us'. We have spent the half term learning about Doctors and Nurses, Paramedics, the Fire Brigade, and refuse collectors.

Post People.

This week we will focus on the postal service and how our letters get from the post box to being delivered.

Literacy



We will start off our week by reading a story called 'Postman Bear'. The children will have the opportunity to write their own letters that they will bring home with them on Friday in the envelopes you have provided. It would be great if you could take a picture of your child posting their letter over half term- you can either send it via email or in their book bags when they return to school.

Understanding the World

We will watch videos of what happens to our letters after we have posted them and what the Post person's job is.

Let's connect

This week is children's mental health week and the theme is 'let's connect'. We will be focusing on our mental health, looking at different emotions and learning more about each other.

Safer internet day

We will join the rest of the school to think about how to be safe when using the internet. We will spend time talking about how we use the internet and will create a set of rules that ensure we are safe.

Here are a few reminders to help with the daily running of the Nursery.

What to bring into Nursery

Please ensure your child has the following with them every day:

- Clearly named water bottle (a familiar sticker might be useful). This must contain only water please, not juice.
- Clearly named book bag- it is helpful for the book bag to have one keyring on so that your child is able to recognise the book bag.
- Clearly named coat.

Your child does not need to bring in an additional rucksack with fruit or spare clothes (unless we have a separate arrangement that has been agreed). It is important that your child is able to be independent from the start, so less items to remember will help!

Lunchboxes

If your child is in Emperor Penguins please remember to pack a healthy, manageable lunch for your child to eat. If there is too much in their lunchbox, they can become over faced.

Grapes- please cut these in half, lengthwise for safety.

NUT FREE SCHOOL! At The Mead we are a nut free school. There are several children with nut allergies in Nursery. It is of uttermost importance that lunchboxes contain no nuts. This also includes foods that contain sesame seeds such as hummus or crackers with seeds.

Uniform

The nursery children look very smart in their new school uniform!

- Skirts and dresses are not part of our school uniform as they can be dangerous when climbing.
- Please make sure that your child wears shoes safe to climbing- trainers or plimsolls are perfect (only Velcro please!)
- Please also remember no jewellery is allowed as part of our school uniform policy. This includes earrings.
- Please name everything!

UNIFORM

All children are required to wear our nursery uniform. Children can dress in the uniform listed in which they feel most comfortable.

Uniform Details

- Royal blue sweatshirt or cardigan with school logo
- Dark grey tracksuit bottoms or dark grey leggings
- White t-shirt (with or without logo)
- Dark grey or royal blue shorts (for summer)
- Shoes/trainers without laces (we suggest Velcro trainers)
- Book bag with school logo



Optional Accessories

- Royal blue reversible fleece/waterproof jacket with school logo
- Royal blue sun hat with school logo
- Royal blue winter hat with school logo



Please note that children should not wear any jewellery to nursery.

All clothing and bags should be clearly labelled with your child's name.