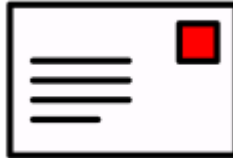


# NURSERY



Coming up week beginning 5.2.24



If possible, please send in a stamped, addressed envelope with your child this week!



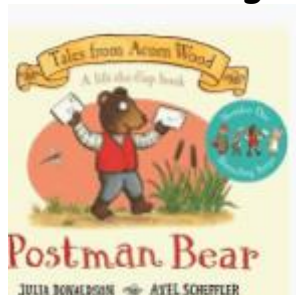
Lunar new year!

Please let a member of the Nursery team if you are celebratng Lunar New Year- we would love to chat to you about how you could help us understand how you celebrate!

**Theme for the Term:** People who help us

The focus this half term will focus on 'People who help us'. We will start off by exploring what we already know about occupations and then delve into a few occupations, learning new words, understanding the roles people have, and how they help us. This week we will brainstorm what we already know.

**Understanding the World, Literacy**



This week we will explore the job of a postal worker. We will start off our week by reading a story called 'Postman Bear'. The children will have the opportunity to write their own letters that they will bring home with them on Friday in the envelopes you have provided. It would be great if you could take a picture of your child posting their letter over half term- you can either send it via email or in their book bags when they return to school. We will watch videos of what happens to our letters after we have posted them and what the Post person's job is.

### **Expressive Arts and Design**

We will continue to explore making marks with chalk through using the chalk to represent the sounds in the music- when the music is loud, quiet, fast or slow.

### **Poetry basket**

Owl

There's a wide-eyed owl with a pointy nose.

He has pointy ears and claws for toes.

He sits in a tree and looks at you,

Then flaps his wings and says, "Tu-whit tu-whoo."

### **Safer internet day**

We will join the rest of the school to think about how to be safe when using the internet. We will spend time talking about how we use the internet and will create a set of rules that ensure we are safe.

### **Key words-**

Post, mail, collect, deliver

### **Request!**

We continue to love junk modelling more than anything! We are very low on junk at the moment Boxes, lots of bottle tops, plastic containers, etc

Please make sure none of the packaging has contained nuts!

Also, if anyone is able to source paper of any kind we would love donations!

### **Changes at home**

Please let us know if there is something different happening at home- moving house/ parents away for example. It is really helpful for us to be able to support the child rather than guessing what the problem might be.

### **Request for spare clothes**

If you have any clothes that your child has grown out of, we would be grateful of donations!

### **Cutlery**

If your child eats lunch at school, please remember to supply cutlery for them to use.

**Here are a few reminders to help with the daily running of the Nursery.**

### **What to bring into Nursery**

Please ensure your child has the following with them every day:

- Clearly named water bottle (a familiar sticker might be useful). This must contain only water please, not juice.
- Clearly named book bag- it is helpful for the book bag to have one keyring on so that your child is able to recognise the book bag.
- Clearly named coat (when needed)
- Clearly named sun hat (when needed)

**Your child does not need to bring in an additional rucksack with fruit or spare clothes (unless we have a separate arrangement that has been agreed). It is important that your child is able to be independent from the start, so less items to remember will help!**

### **Lunchboxes**

**If your child is in in Nursery all day please remember to pack a healthy, manageable lunch for your child to eat. If there is too much in their lunchbox, they can become over faced. Please name your child's lunch box on the outside of the lunchbox so it is easily visible.**

**Grapes- please cut these in half, lengthwise for safety.**

**NUT FREE SCHOOL! At The Mead we are a nut free school. There are several children with nut allergies in Nursery. It is of uttermost importance that lunchboxes contain no nuts.**

We are excited to announce, in April we are changing our catering provider from Twelve15 to PS Catering. We have met with the PS catering team and they are eager to be a part of The Mead Infant and Nursery School environment. We will be communicating more about this in the coming weeks.

### **Uniform**

The nursery children look very smart in their new school uniform!

- Skirts and dresses are not part of our school uniform as they can be dangerous when climbing.
- Please make sure that your child wears shoes safe to climbing- trainers or plimsolls are perfect (only Velcro please!)
- Please also remember no jewellery is allowed as part of our school uniform policy. This includes earrings.
- Please name everything!

## UNIFORM

All children are required to wear our nursery uniform. Children can dress in the uniform listed in which they feel most comfortable.

### Uniform Details

- Royal blue sweatshirt or cardigan with school logo
- Dark grey tracksuit bottoms or dark grey leggings
- White t-shirt (with or without logo)
- Dark grey or royal blue shorts (for summer)
- Shoes/trainers without laces (we suggest Velcro trainers)
- Book bag with school logo



### Optional Accessories

- Royal blue reversible fleece/waterproof jacket with school logo
- Royal blue sun hat with school logo
- Royal blue winter hat with school logo



Please note that children should not wear any jewellery to nursery.

All clothing and bags should be clearly labelled with your child's name.