

NURSERY



NURSERY

Coming up week beginning 9/2/26

Class emails

rockhoppers@mead.surrey.sch.uk

emperors@mead.surrey.sch.uk

Reminder - Please complete and return the Surrey County Council Funded Early Education for Working Parents Entitlements, FEET, and Universal Funding Declaration Form - 2025/26

Junk modelling- Please don't throw your recycling away- we need boxes, lots of bottle tops, plastic containers, etc

Please make sure none of the packaging has contained nuts!

Also, if anyone is able to source paper of any kind we would love donations!



Yogurt lids

Luna New Year

If you are celebrating Luna new Year over half term, please remember to send in photos to the email addresses above!

Theme for the Term: People who help us

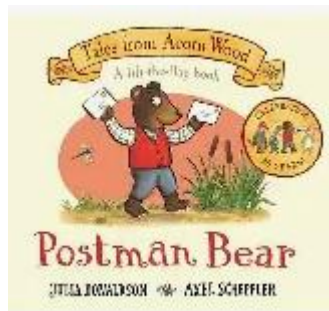
The focus this half term will focus on 'People who help us'. We will start off by exploring what we already know about occupations and then delve into a few occupations, learning new words, understanding the roles people have, and how

they help us. Last week we brainstormed what we already know about the jobs grown-ups do.

Reading and Understanding the World- Postman or Post Woman

This week we will learn about the role of Postman or Post Woman.

We will introduce a letterbox into the Nursery environment and spend time role playing being a post man or post woman.



Key words- deliver, letter, parcel

The children will come home with an envelope with a picture or letter inside before the half term break. So that the children experience posting a letter it would be great if you could post the letter to your home address with your child. **If you are able to take a photo of your child posting the letter into the letterbox and email it to the class email address, this would really help our conversations!**

PSED- Online safety

This week we will explore how to keep ourselves safe when online.

Discussions will include the following:

- Phones and tablets can be fun.
- Grown-ups help us use them safely.
- We always ask a grown-up first.

BUT

"If we see something we don't like or makes us feel worried or funny inside..."

"We stop, and tell a grown-up straight away."

Maths

The children will practise continuing and copying simple patterns and will have opportunities to make their own ABAB patterns using colours, shapes and everyday objects. We will also enjoy playing with patterns through actions and sounds, such as clapping, stamping and repeating noises, to help children

recognise patterns in different ways. We will learn that when there is a pattern, it is always the same again.

Key word- repeat

Here are a few reminders to help with the daily running of the Nursery.

What to bring into Nursery:

Lunchboxes

We are a NUT FREE SCHOOL! This includes anything that contains nuts such as peanut butter or Nutella. To keep all children safe with nut allergies, please also ensure you do not include pesto in your child's lunch box. There are several children with nut allergies in Nursery. It is of uttermost importance that lunchboxes contain no nuts.

If your child is in Nursery all day please remember to pack a healthy, manageable lunch for your child to eat. If there is too much in their lunchbox, they can become over faced. Please name your child's lunch box on the outside of the lunchbox so it is easily visible.

Grapes and olives- please cut these in half, lengthwise for safety.

Look out for a 'Healthy Packed Lunch Guide' that will be sent out next week.

Please ensure your child has the following with them every day:

- Clearly named water bottle (a familiar sticker might be useful). This must contain only water please, not juice.
- Clearly named book bag- it is helpful for the book bag to have one keyring on so that your child is able to recognise the book bag.
- Clearly named coat
- Clearly named sun hat (when needed)

Your child does not need to bring in an additional rucksack with fruit or spare clothes (unless we have a separate arrangement that has been agreed). It is important that your child is able to be independent from the start, so less items to remember will help!

Happy hellos and great goodbyes- Part of the Mead way is to say hello and goodbye at the start and end of the day. Please encourage your child to say hello and goodbye!

Uniform

The nursery children look very smart in their new school uniform!

- Skirts and dresses are not part of our school uniform as they can be dangerous when climbing.

- Please make sure that your child wears shoes safe to climbing- trainers or plimsolls are perfect (only Velcro please!)
- Please also remember no jewellery is allowed as part of our school uniform policy. This includes earrings.
- Please name everything!

UNIFORM

All children are required to wear our nursery uniform. Children can dress in the uniform listed in which they feel most comfortable.

Uniform Details

- Royal blue sweatshirt or cardigan with school logo
- Dark grey tracksuit bottoms or dark grey leggings
- White t-shirt (with or without logo)
- Dark grey or royal blue shorts (for summer)
- Shoes/trainers without laces (we suggest Velcro trainers)
- Book bag with school logo



Optional Accessories

- Royal blue reversible fleece/waterproof jacket with school logo
- Royal blue sun hat with school logo
- Royal blue winter hat with school logo



Please note that children should not wear any jewellery to nursery.

All clothing and bags should be clearly labelled with your child's name.